

60085

PORTABLE WET SAW



OWNER'S MANUAL and Parts List

INCLUDING ALL OPERATING INSTRUCTIONS



CAUTION!
Read and follow all safety and
operating instructions before
using this saw.

080800



Q.E.P. CO., INC.

1081 Holland Drive
Boca Raton, FL 33487

(561) 994-5550

City of Industry, CA 91749

Mexico, MO 65265

Bramalea, ON Canada L6T 1A7



60085

PORTABLE WET SAW OWNER'S MANUAL and Parts List

INCLUDING ALL OPERATING INSTRUCTIONS

TABLE OF CONTENTS

Safety Guidelines..2,3
 Features of the Wet Saw.....4
 Electrical / Motor Specifications ...4
 Unpacking, Assembly & Set-Up4
 Saw Operation5
 Saw Maintenance....5
 Diagram of Wet Saw6
 Parts List.....6



LIMITED WARRANTY

This product is covered by a 30-day warranty from the date of purchase. If the product is defective in workmanship or material and upon returning the product to distributor/dealer in its original packaging, Q.E.P. will repair and/or replace it free of charge. This warranty DOES NOT COVER normal wear, nor any damage as a result of accidents, misuse, abuse or negligence. Q.E.P.'s obligations under this warranty shall be limited to the repair and/or replacement of the product. Q.E.P. shall not be liable for consequential damages. This warranty is void if the product or any of its components are modified, altered, or in any way changed, or if the product is used in a manner or with a blade that is not recommended by Q.E.P. The water pump is excluded from this warranty and is subject to its manufacturer's warranty.

This warranty is in lieu of all other warranties expressed or implied.

IMPORTANT: The warranty card must be filled out and received within 30 days of purchase to validate warranty.

SAFETY GUIDELINES

READ THIS OWNER'S MANUAL COMPLETELY AND MAKE SURE YOU UNDERSTAND ALL OF ITS SAFETY GUIDELINES.

1. Ensure the power switch on your tile saw is in the "OFF" position before plugging it in.
2. Reduce the risk of unintentional starting. Make sure switch is in off position before plugging in.
3. Do not leave the tile saw unattended while it is running. Always return the power to the "OFF" position when not in use.
4. Always wear safety goggles, dust mask and ear protection when operating the tile saw. Everyday eyeglasses only have impact resistant lenses, they are NOT safety glasses.
5. Remove adjusting keys and wrenches. Form habit of checking to see that keys and adjusting wrenches are removed from tool before turning it on.
6. Use recommended accessories. Consult the owner's manual for recommended accessories. The use of improper accessories may cause risk of injury to persons.
7. Always remain alert when the tile saw is in use. Inattention on the part of the operator may lead to a serious injury.
8. Don't use in dangerous environment. Don't use power tools in damp or wet locations, or expose them to rain. Keep work area well lighted.
9. Keep children away. All visitors should be kept at a safe distance from work area.
10. Make workshop kidproof with padlocks, master switches, or by removing starter keys.
11. Always keep the blade guard and splash hood in the "DOWN" position while operating the tile saw.
12. Disconnect the unit from its power source before installing or changing blades and before cleaning or servicing the tile saw.
13. Never stand on tools. Serious injuries could occur if the tool tips or if the cutting tool is unintentionally contacted.
14. Wear proper apparel. Do not wear loose clothing, gloves, neckties, rings, bracelets, or other jewelry which may get caught in moving parts. Non-slip footwear is recommended. Wear protective hair covering to contain long hair.
15. Do not directly wash the bottom of the motor.
16. Do not force the material being cut. Always let the blade cut at its own speed.
17. Do not force a tool to do a job it isn't designed to do.
18. Make sure you use the correct blade for the job you are doing.
19. Secure work. Use clamps or a vise to hold work when practical. It's safer than using your hand and it frees both hands to operate tool.
20. Don't overreach. Keep proper footing and balance at all times.
21. This tile saw is equipped with a 3-prong electrical plug. Do not alter the plug or use a 2-prong receptacle.
22. Keep your work space clear and free of all debris. Cluttered areas and benches invite accidents.
23. Keep the tile saw clean and maintained to achieve the safest and highest performance for each job.
24. Check damaged parts. Before further use of the tool, a guard or other part that is damaged should be carefully checked to determine that it will operate properly and perform its intended function - check alignment of moving parts, binding of moving parts, breakage of parts, mounting, and any other conditions that may affect its operation. A guard or other part that is damaged should be properly repaired or replaced.
25. Check diamond blades carefully for cracks, nicks, missing diamond matrix or out-of-alignment condition. Replace damaged blades immediately. **DO NOT USE DAMAGED BLADES.** They may cause bodily injury.
26. Direction of feed. Feed work into a blade or cutter against the direction of rotation of the blade or cutter only.
27. Maintain tools with care. Keep tools sharp and clean for best and safest performance. Follow instructions for lubricating and changing accessories.
28. Do not overfill water reservoir.
29. POSITIONING OF TILE SAW (See Illustration 1)
 - A. To avoid the possibility of the appliance plug or receptacle getting wet, position the tile saw to one side of a wall-mounted receptacle to prevent water from dripping onto the receptacle or plug. The user should arrange a "drip loop" in the cord connecting the saw to a receptacle. The "drip loop" is that part of the cord below the level of the receptacle, or connector if an extension cord is used, to prevent water traveling along the cord and coming in contact with the receptacle.
 - B. If the plug or receptacle does get wet, DO NOT unplug the cord. Disconnect the fuse or circuit breaker that supplies power to the tool. Then, unplug and examine for presence of water in the receptacle.

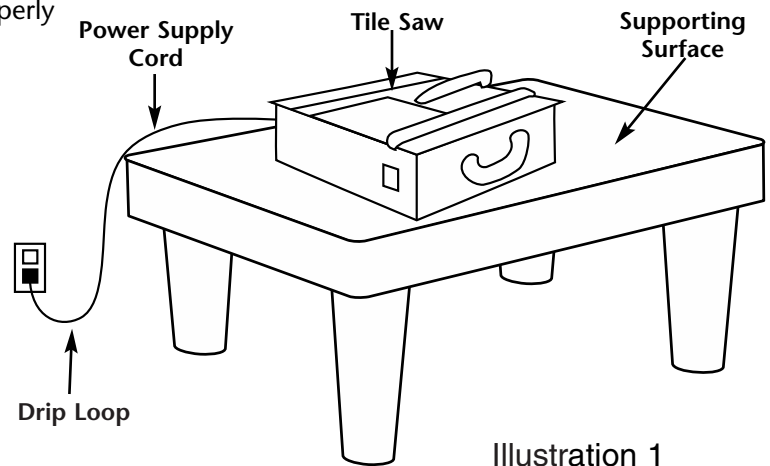


Illustration 1

30. EXTENSION CORDS

A. Use only extension cords that are intended for outdoor use. These extension cords are identified by a label, "Acceptable for use with outdoor appliances; store indoors while not in use". Use only extension cords having an electrical rating not less than the rating of the product. Do not use damaged extension cords. Examine extension cord before using and replace if damaged. Do not abuse extension cords and do not yank on any cord to disconnect. Keep cord away from heat and sharp edges. Always disconnect the extension cord from the receptacle before disconnecting the product from the extension cord.

WARNING: To reduce the risk of electrocution, keep all connections dry and off the ground. Do not touch plug with wet hands.

Minimum Gauge for Cord

Ampere Rating		Total length of cord in feet				
		Volts 120V 240V	25ft. 50ft.	50ft. 100ft.	100ft. 200ft.	150ft. 300ft.
More Than	Not More Than	AWG				
0	6		18	16	16	14
6	10		18	16	14	12
10	12		16	16	14	12
12	16		14	12	Not Recommended	

B. Ground Fault Circuit Interrupter (GFCI) protection should be provided on the circuit(s) or outlet(s) to be used for the tile saw. Receptacles that have built-in GFCI protection are available and may be used for this measure of safety.

31. GROUNDING INSTRUCTIONS

A. All grounded, cord-connected tools:

In the event of a malfunction or breakdown, grounding provides a path of least resistance for electric current to reduce the risk of electric shock. This tool is equipped with an electric cord having an equipment-grounding conductor and a grounding plug. The plug must be plugged into a matching outlet that is properly installed and grounded in accordance with all local codes and ordinances.

Do not modify the plug provided - if it will not fit the outlet, have the proper outlet installed by a qualified electrician.

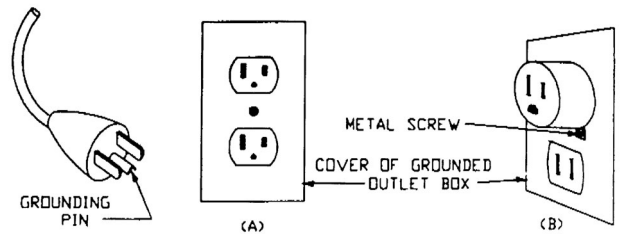
Improper connection of the equipment-grounding conductor can result in a risk of electric shock. The conductor with insulation having an outer surface that is green with or without yellow stripes is the equipment-grounding conductor. If repair or replacement of the electric cord or plug is necessary, do not connect the equipment-grounding conductor to a live terminal.

Check with a qualified electrician or service personnel if the grounding instructions are not completely understood, or if in doubt as to whether the tool is properly grounded.

Use only 3-wire extension cords that have 3-prong grounding plugs and 3-pole receptacles that accept the tool's plug.

Repair or replace damaged or worn cord immediately.

Illustration 2
Grounding Methods



B. Grounded, cord-connected tools intended for use on a supply circuit having a nominal rating less than 150 volts: This tool is intended for use on a circuit that has an outlet that looks like the one shown in Sketch A in Illustration 2. The tool has a grounding plug that looks like the plug illustrated in Sketch A in Illustration 2. A temporary adapter, which looks like the adapter shown in Sketch B in Illustration 2, may be used to connect this plug to a 2-pole receptacle as shown in Sketch B in Illustration 2 if a properly grounded outlet is not available. The temporary adapter should be used only until a properly grounded outlet can be installed by a qualified electrician. The green-colored rigid ear, lug, and the like, extending from the adapter must be connected to a permanent ground such as a properly grounded outlet box.

FEATURES OF THE WET SAW

1. Direct-drive, 1/2 HP motor, 3400 RPM.
2. Flat cutting table to cut tile of any size. 7" blade cuts tile up to 33 mm thick.
3. Cutting table is held closed by magnets.
4. Adjustable guide for right and left-hand use for straight cuts.
5. Adjustable right cutting table can be easily raised up 15°, 30°, 45° & 60° for precision tile corner joints.
6. Miter guide for cutting range from 0° to 60°.
7. The left cutting table is a water reservoir for cooling the blade. The water reservoir has a side overflow hole to ensure the proper water level and prevent over-filling.
8. Water from the cut is collected in channels on the side of cutting table and returned to the water reservoir.
9. Folding handle for easy carrying. Lightweight for easy setup and easy maintenance.
10. Specially designed motor case is separated from the water reservoir by a solid partition.
11. The electrical cord is stored underneath in a separate compartment.
12. Portability allows easy use at the work site.

ELECTRICAL / MOTOR SPECIFICATIONS

115V & 230V MOTOR SPECIFICATIONS

- | | | |
|--------------|----------|-----------|
| • Horsepower | 1/2 H.P. | 1/2 H.P. |
| • Volts | 115V | 230V |
| • Amps/Watts | 3.5 amps | 250 watts |
| • RPM | 3,400 | 2,800 |
| • Cycle | 60 | 50 |
| • Phase | 1 | 1 |
- Connect saw as close as possible to power source.

EXTENSION CORDS: Use proper extension cord and make sure your extension cord is in good condition. When using an extension cord, ensure all cords are no smaller than #18 gauge and equipped with 3-prong plugs. Use of anything smaller may result in overheating or burn out of the motor. It is recommended to have an electrician check the incoming voltage prior to usage to ensure safe and efficient use. The smaller the gauge number the heavier the cord.

CAUTION: TO AVOID PERMANENT MOTOR DAMAGE YOU MUST USE THE CORRECT EXTENSION CORD. NEVER USE MORE THAN ONE EXTENSION CORD AT A TIME.

ASSEMBLY & SETUP

CAUTION: FOLLOW ALL OF THE ASSEMBLY & INSTALLATION INSTRUCTIONS COMPLETELY BEFORE CONNECTING THE TILE SAW TO A POWER SOURCE OR TURNING THE MOTOR ON.

The contents of the container are as follows:

- 7" Diamond Blade
- Blade Guard Set
- Tile Guide
- Owner's Manual
- Miter Guide (opt.)
- Blade Wrench

• INSTALLING THE BLADE

Place the blade onto the shaft, pushing it up against the inner washer. Make sure the side of the blade with directional arrow is facing towards you. Next, replace the outer washer and blade shaft nut, then tighten the blade shaft nut. Verify the nut is firmly tightened with the wrench provided. **DO NOT OVER-TIGHTEN!** (See Diagram 1).

• INSTALLING THE BLADE GUARD

Place guard support into the socket. Tighten screw and check that the support is parallel to the blade. Place blade guard onto support and tighten wing nut. (See Diagram 1)

• INSTALLING THE TILE GUIDE

Place tile guide on top of the cutting table and clamp both ends. The guide is marked in both inches and centimeters to make cuts accurate. Tile guide can be used on either side of the cutting blade. (See Diagram 2)

• INSTALLING THE MITER GUIDE

Place miter guide onto its left track. (See Diagram 2)

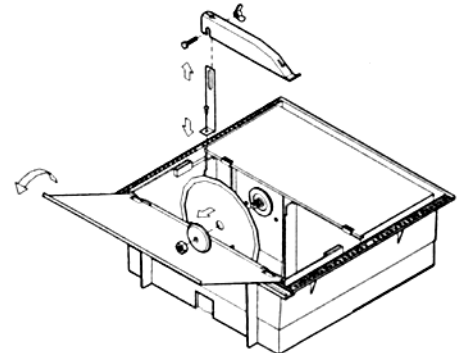


DIAGRAM 1

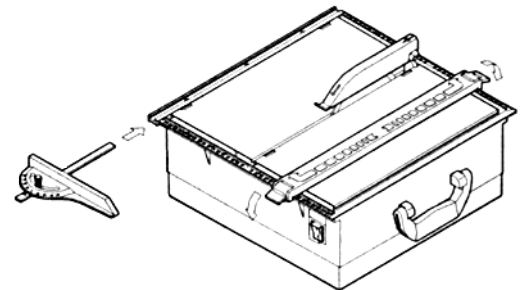


DIAGRAM 2

SAW OPERATION

- **TAKE OUT THE ELECTRICAL CORD** to connect to the power source. The electrical cord is stored underneath the cutter. (See Diagram 3)
- **RAISE THE BLADE GUARD** up to the highest position, then open the left cutting table to fill the reservoir with water to the recommended level. Attention! Keep water level with lines. (See Diagram 4)
- **LOWER THE BLADE GUARD** above the blade.
- **FOR STRAIGHT CUTTING**, after the tile guide is positioned for the desired cut, place the material flush against the tile guide then push the material forward of the blade. (See Diagram 5)
- **FOR MITER CUTTING**, raise the right cutting table to the desired angle and select either 15°, 30°, 45° or 60°. Put the two stands into the grooves to hold the cutting table in place. Place the material face down onto the right cutting table and you are ready to cut. (See Diagram 6)
- **FOR ANGLE CUTTING**, choose the degree you want and tighten the handle. Then, push the miter guide and material together forward of the blade to cut the material. (See Diagram 7)

DIAGRAM 3

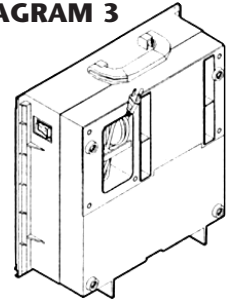


DIAGRAM 4

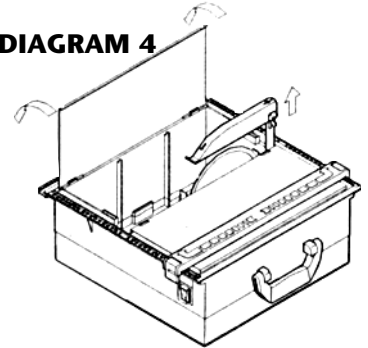


DIAGRAM 7

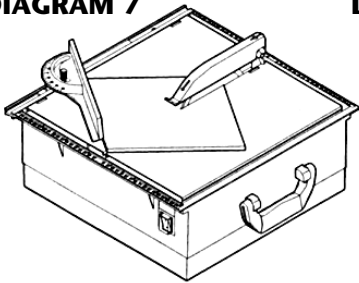


DIAGRAM 6

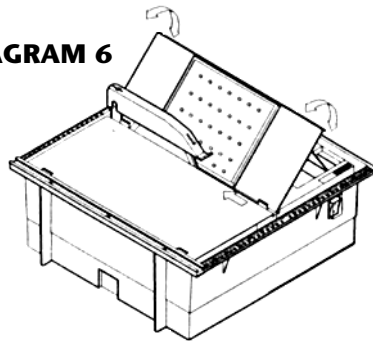
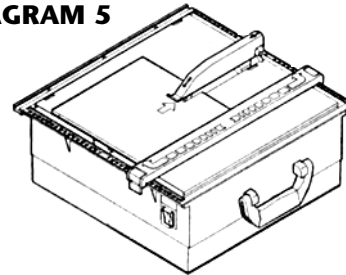


DIAGRAM 5



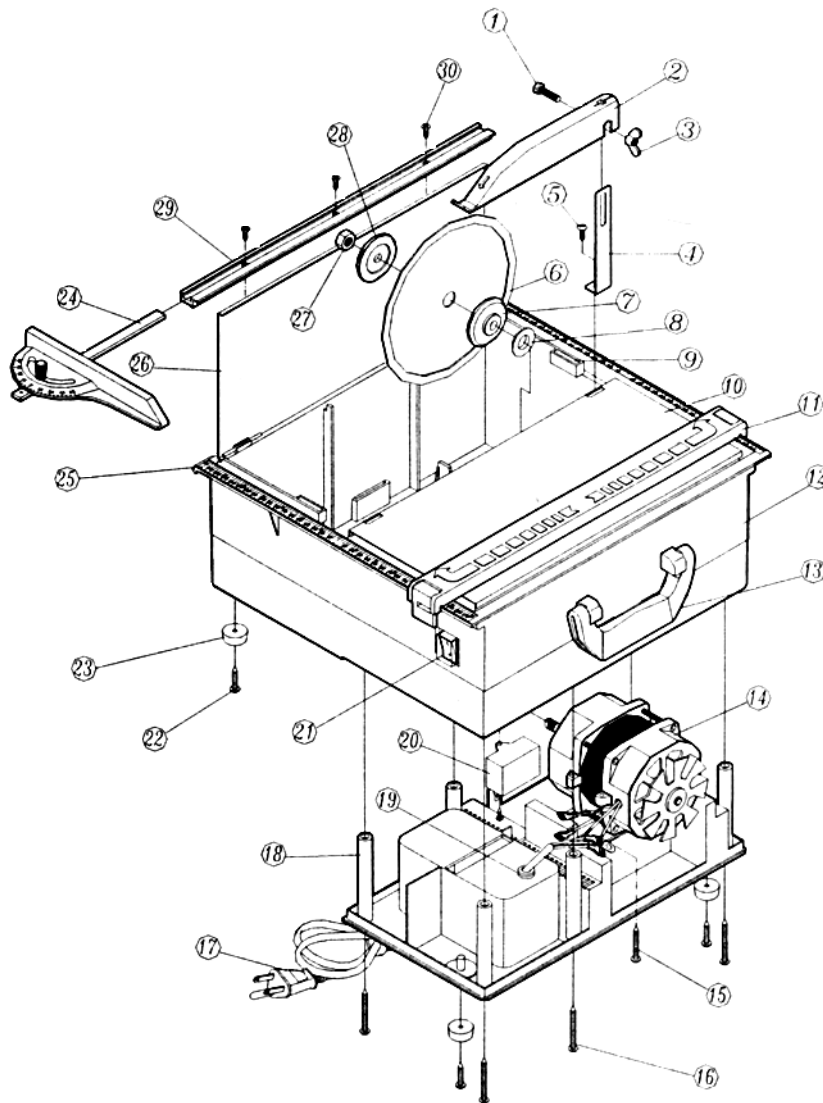
SAW MAINTENANCE

WARNING: DO NOT SERVICE, CLEAN OR MAINTAIN THE SAW WITHOUT FIRST TURNING OFF THE MOTOR AND UNPLUGGING THE SAW FROM ITS POWER SOURCE. FAILURE TO DO SO MAY RESULT IN SERIOUS INJURY TO THE OPERATOR.

For the longest life and best performance:

- Always clean the tile cutter after each use.
- Wipe off all exterior surfaces and keep the cutting table clean and free of tile chips and debris.
- Always let the blade cut at its own speed. Do not force the material being cut.
- Always check the blade for cracks or signs of fatigue.
- Always clean the reservoir thoroughly after use.
- Always store the electrical cord underneath the cutter after use.
- Always keep water level at the recommended level. Do not overfill or allow the cutter to run dry.
- Always store in a dry environment.
- Never attempt to service the internal parts of the motor by yourself as this will void your guarantee.

DIAGRAM OF WET SAW



PARTS LIST #60085 PORTABLE WET SAW

DESCRIPTION	No.
Wing Screw	1
Blade Guard	2
Wing Nut	3
Guard Support	4
Guard Support Screw	5
7" Continuous Rim Blade	6
Inner Washer	7
Rubber Ring	8
Magnet	9
Adjustable Right Cutting Table	10
Tile Guide	11
Frame	12
Carrying Handle - Folding	13
Motor	14
Motor Screw	15
Motor Bottom Base Screw	16
Electrical Cord	17
Motor Bottom Base	18
Electrical Cord Fixed Head	19
Capacitor	20
Waterproof Switch	21
Screw for Rubber Stand	22
Rubber Stand	23
Miter Guide Set	24
Ruler Guide Sticker	25
Left Cutting Table	26
Blade Lock Nut	27
Outer Washer	28
Sliding Track for Angle Guide	29
Sliding Track Screw	30