



# waxDRY Diamond Hole Saw Kit with Case 10485

up to  
**12X**  
LONGER LIFE  
than standard hole saws



**1/4"**  
6 mm



**5/16"**  
8 mm



**3/8"**  
10 mm



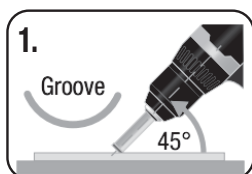
**1/2"**  
12 mm

**DURABLE**  
Protective storage  
case with foam

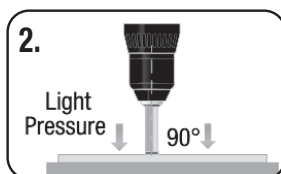


**DESIGNED FOR  
EASY, FAST AND  
ACCURATE CUTTING**

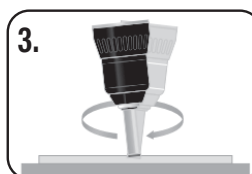
## Directions for use:



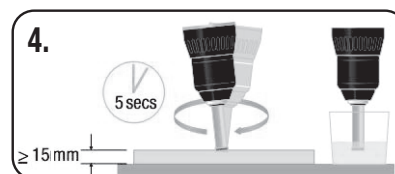
At full RPM, start drilling at a 45° angle. This will create a semi-circular groove in the tile surface.



Once the groove has been established raise the drill to 90° and apply light pressure.



Gently oscillate the drill as the hole is being cut, continuing to apply light pressure only.



When cutting thicker materials / deeper holes >15 mm (5/8") additional cooling is required. Dip the hole saw into water every 5 seconds during cutting.

The QEP® waxDRY Diamond Hole Saws for drills have up to a 12x longer life. They are designed for the easy, fast and accurate cutting of porcelain, ceramic and glass tiles. These hole saws feature a special diamond grit edge for faster and smoother cuts and do not require water cooling on any sizes.

**Professional Tools for Professional Results**

**www.QEP.com**