



4" Diamond Hole Saw

10475



up to **12X** LONGER LIFE than standard hole saws

for grinders

up to **50% FASTER** THAN A DRILL

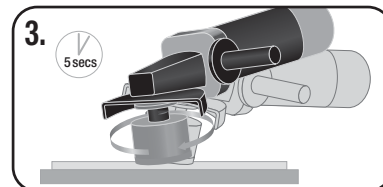
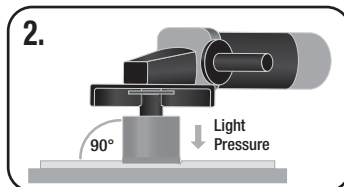
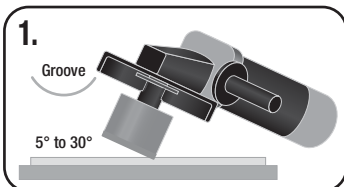


DESIGNED FOR EASY, FAST AND ACCURATE CUTTING

Directions for use:

Grinder must be used at Full Power

Recommended RPM is 8000-12000



SCAN HERE FOR PRODUCT INFO



The QEP® 4" Diamond Hole Saw for standard grinders is up to 50% faster and last up to 12X longer than a standard diamond drill bit. It is designed for the easy, fast and accurate cutting of porcelain, ceramic and glass tiles. For all sizes, water can be used as additional cooling to prolong the life of the bit.

Professional Tools for Professional Results

QEP.com